



ENTREPRISE FAMILIALE


Groupe Paloma
DEPUIS 1948

NOS ÉTABLISSEMENTS



ANCORA



La Corderie





PALOMA BEACH

COASTAL DINING ESTABLISHMENT

A genuine institution, Paloma Beach is a beach and restaurant situated on the Saint-Jean-Cap-Ferrat peninsula. Since 1948, it has been a beloved destination for both locals and visitors, cherished across generations.

Removed from the city's hustle and bustle and situated in a verdant oasis, Paloma Beach is a genuine hidden gem. It provides its visitors with a stunning vista of Beaulieu and Monaco.

At Paloma Beach, we prioritize the quality of our ingredients. Our culinary proficiency is showcased in our specialties: grilled fish and salads.

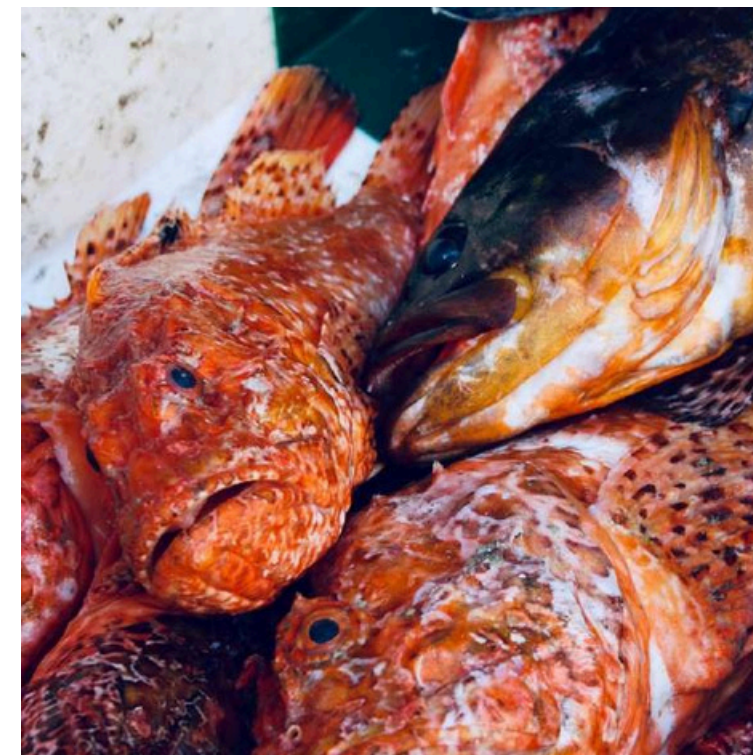
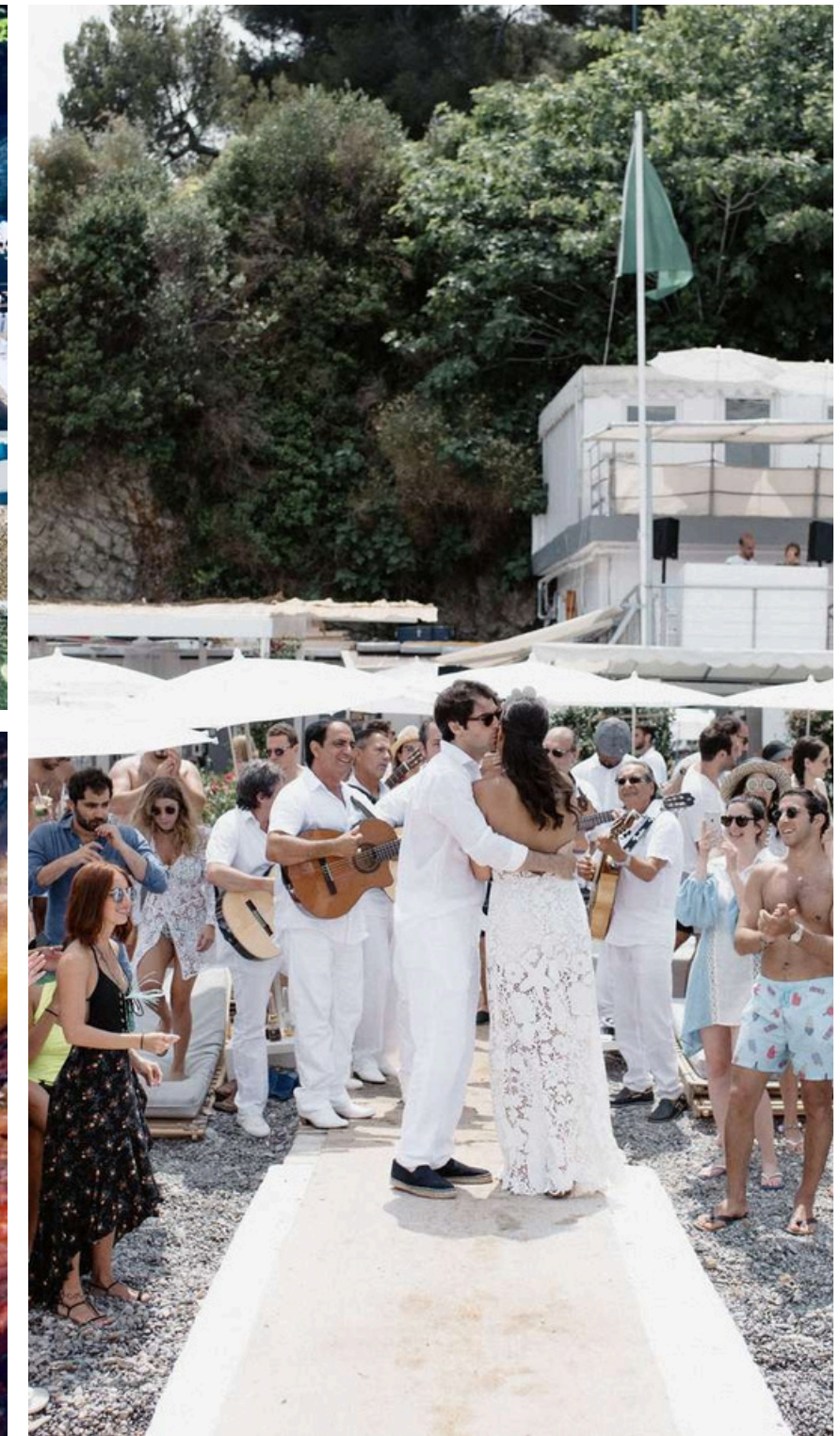
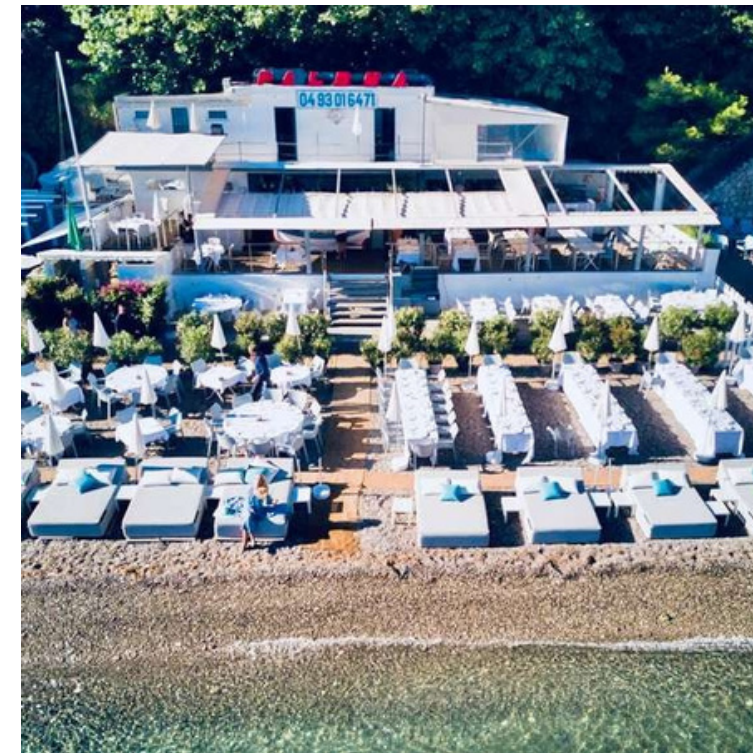
FACILITY CAPACITIES

TOTAL: 200 INDIVIDUALS COVERED TERRACE:
50 INDIVIDUALS
BEACH: 150 INDIVIDUALS

THE + :
PARADISIACAL
COASTLINE



OPTIONS: 🚤 CALESSINO BOAT 🚗 SHUTTLE 🚐 VAN SHUTTLE ...



@PALOMA_BEACH

SAINT JEAN CAP FERRAT

📍 ADDRESS: 1 CHEM. DE SAINT-HOSPICE

BEAUTIFUL COVE

ECO-RESPONSIBLE BEACH RESTAURANT SUITABLE FOR FAMILIES

Baia Bella Beach is an eco-responsible, family-friendly restaurant situated in the heart of Little Africa, specializing in modern Mediterranean cuisine.

Nestled amidst verdant landscapes and centuries-old umbrella pines, Baia Bella is a genuine sanctuary of tranquility in Beaulieu-sur-Mer. This idyllic locale exudes a vacation ambiance throughout the entire year.

Baia Bella is the inaugural carbon-neutral beach in France, dedicated to environmental sustainability. The establishment has received the Clef Verte ecolabel and the 0 Carbon certification from Allcot.

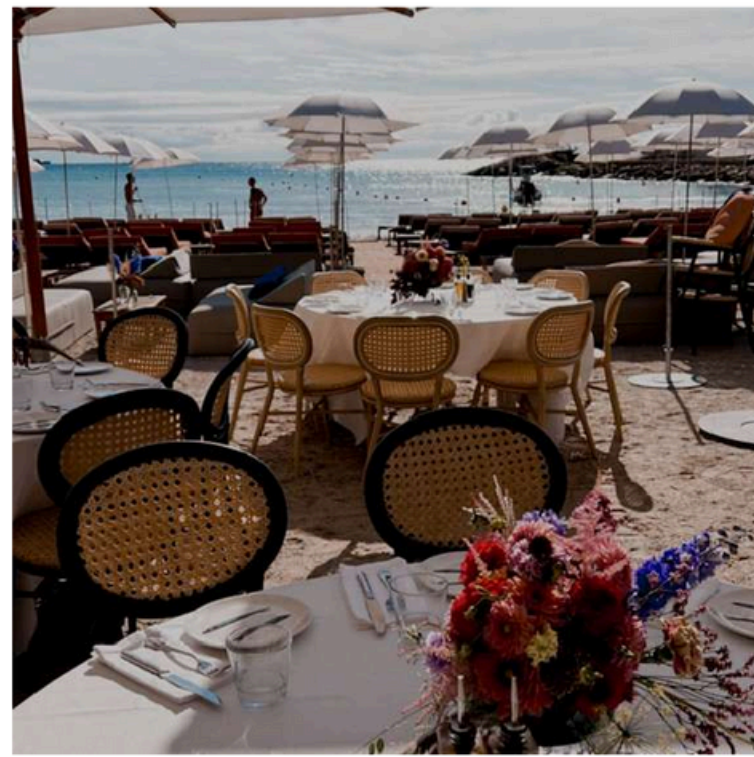
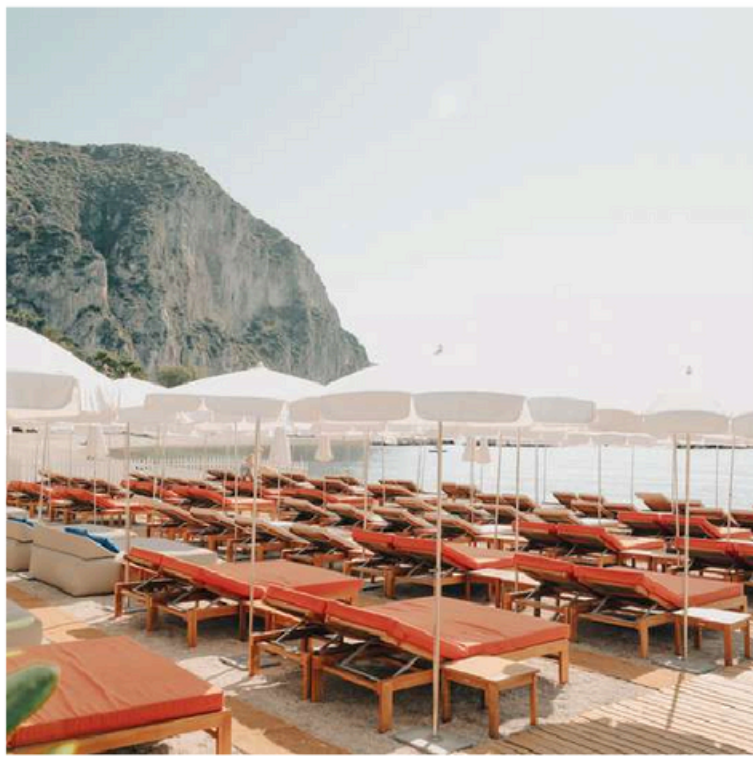
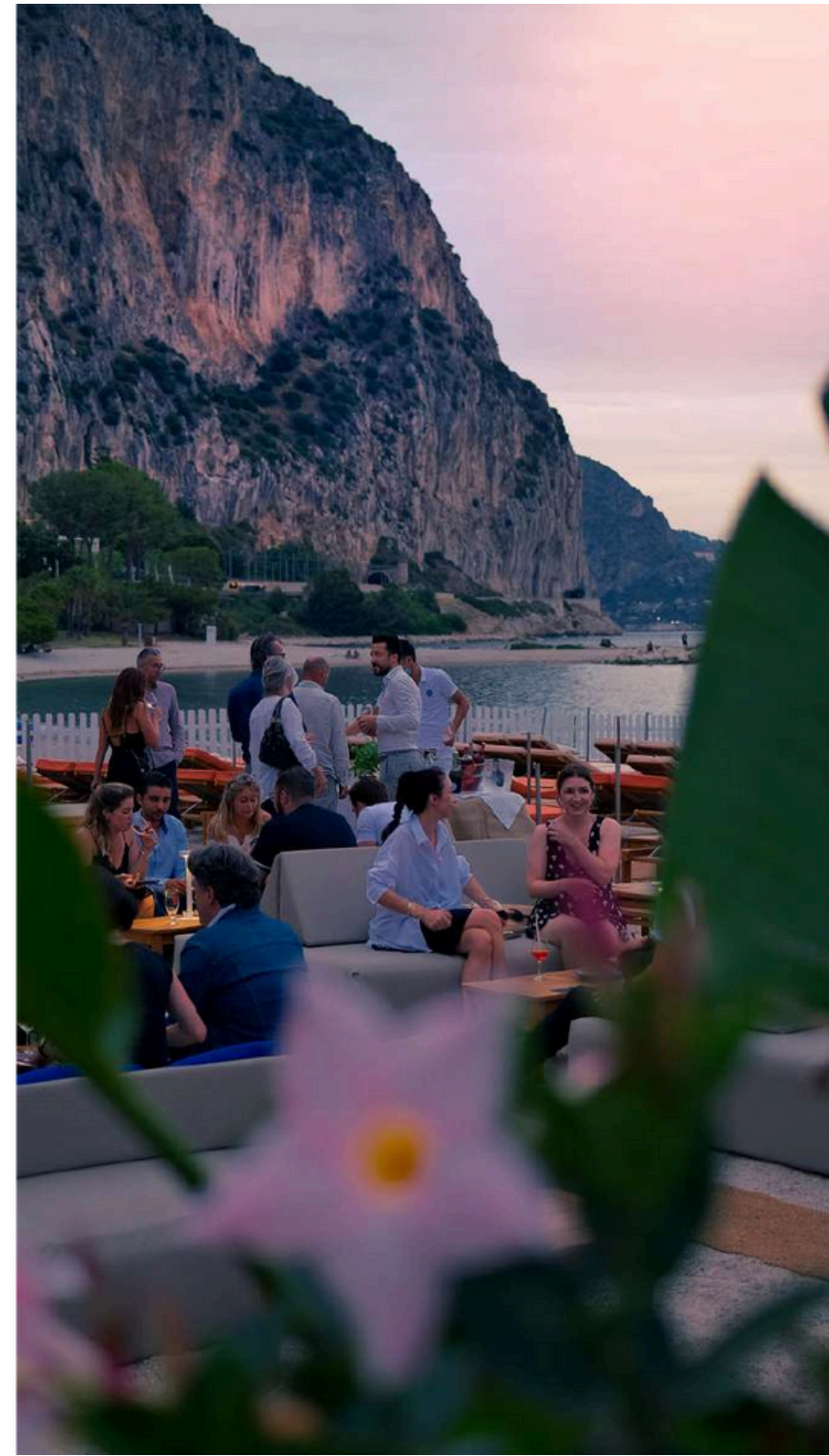
FACILITY CAPACITIES

FORMAT COCKTAIL:	450 PEOPLE
SITTING CONFIGURATION:	150 PEOPLE
BEACH CONFIGURATION:	250 PEOPLE

THE +:
ECOLOGICAL
BEACH



OPTIONS: 🚤 BOAT DROP-OFF, 🧑‍🚒 VALET SERVICE, ✨ FIREWORKS, 🎡 PLAYGROUND, 🅑 NEARBY PARKING...



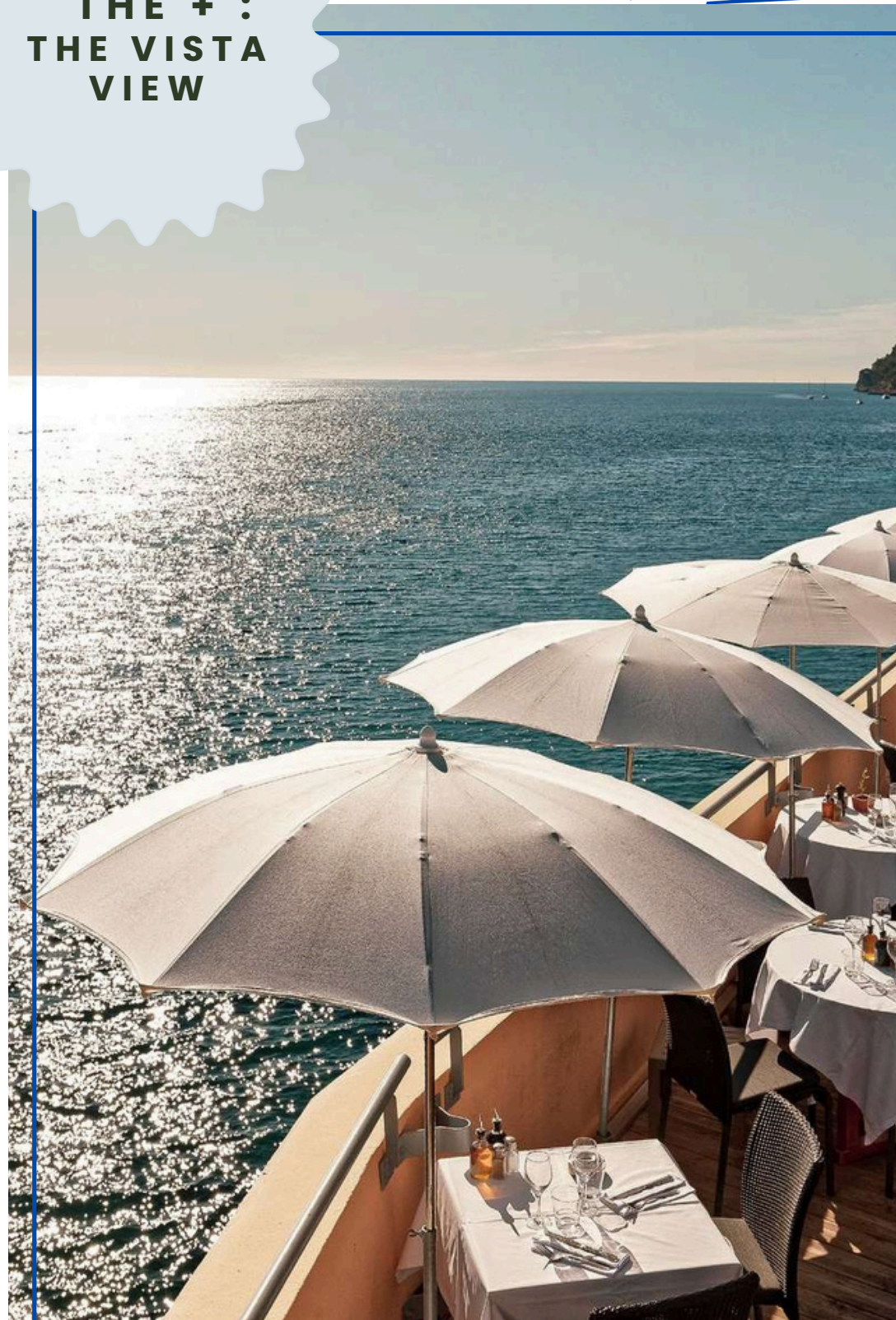
@BAIABELLAPLAGE

BEAULIEU-SUR-MER



ADDRESS: LITTLE AFRICA BEACH

**THE + :
THE VISTA
VIEW**



MAYSSA BEACH

PANORAMIC DINING ESTABLISHMENT

The Mayssa invites you to embark on a distinctive vessel offering a panoramic view of the harbor at Villefranche-sur-Mer.

The establishment provides Mediterranean cuisine accompanied by attentive service.

This decor is perfect for significant life events, family gatherings, or intimate dinners.

FACILITY CAPACITIES

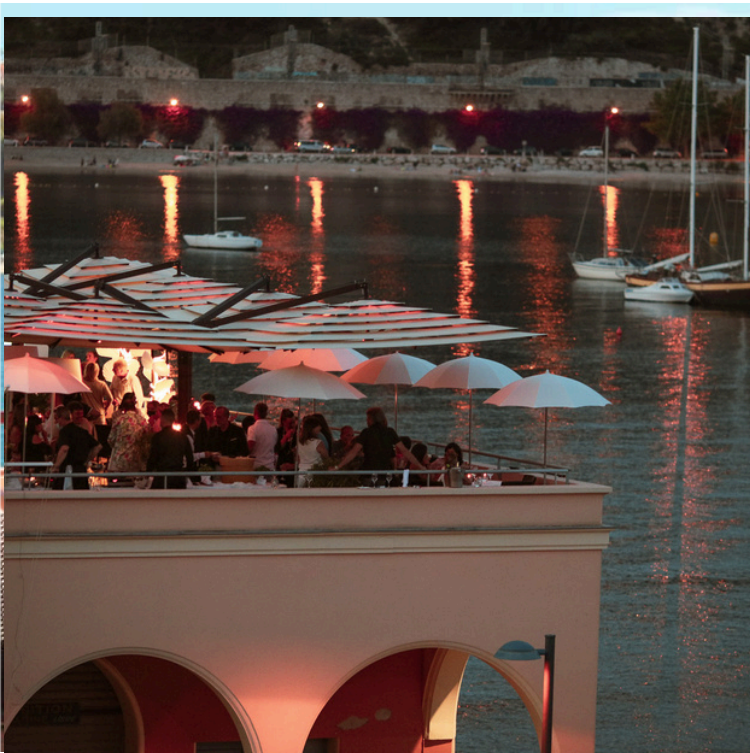
INDOOR ROOM: 60 PERSONS

COVERED TERRACE: 60 PERSONS

PANORAMIC TERRACE: 120 PERSONS

DOUBLE VIEW TERRACE: 40 INDIVIDUALS

OPTIONS: 🚤 SHUTTLE BOAT 🎧 DJ, 🎪 MUSICAL ENTERTAINMENT 🌸 FLORAL ARRANGEMENTS...



@MAYSSABEACH

VILLEFRANCHE-SUR-MER

📍 ADDRESS: WILSON PLACE



FOAM

THE + :
SEAFOOD



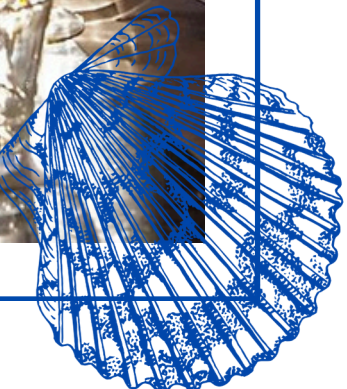
SEAFOOD AND PIZZA RESTAURANT

Ideally located opposite the Villefranche harbor, this establishment offers a magnificent sunny terrace with a breathtaking view of the Villefranche-sur-Mer harbor. Inside, we discover a belle époque decor that takes us back in time.

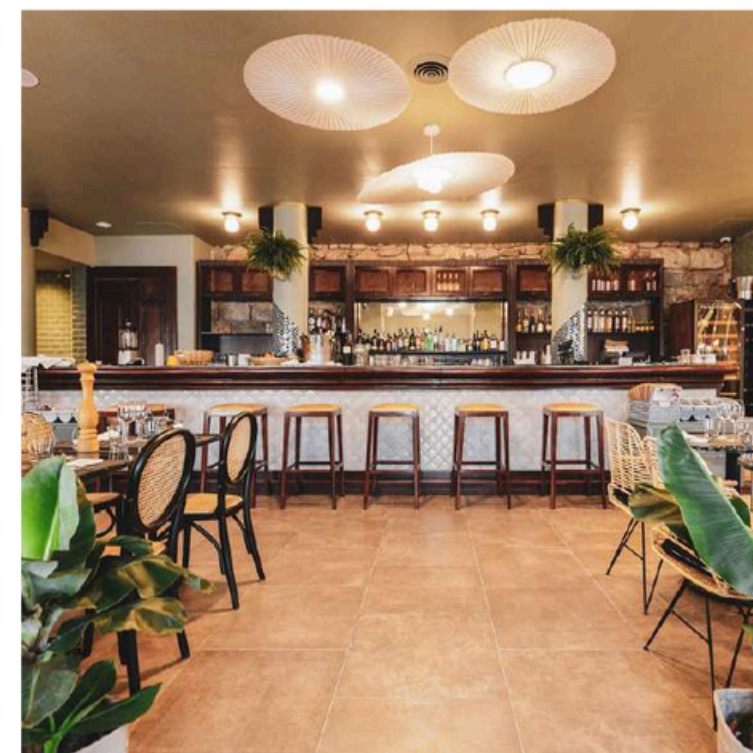
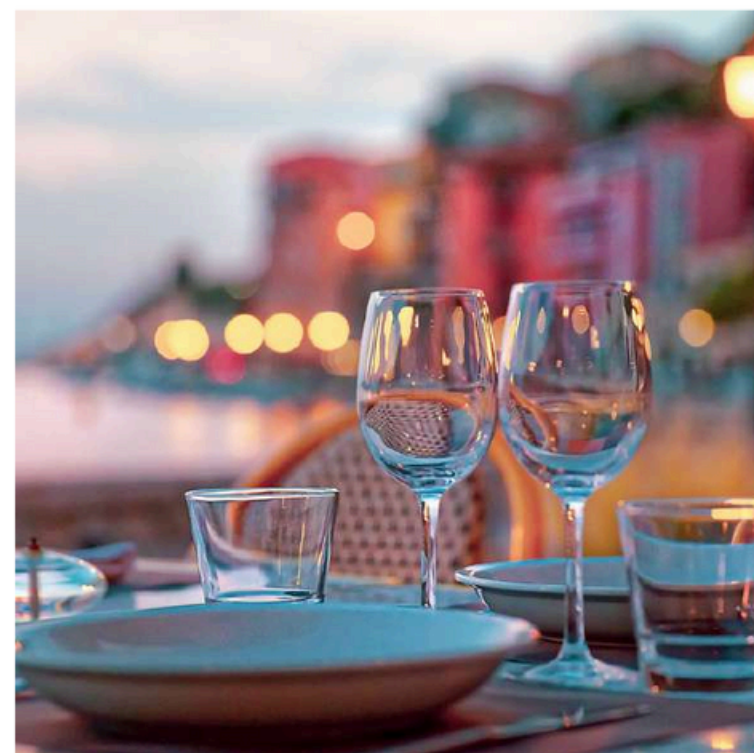
A seafood bench all year round. Espuma also offers many varieties of pizzas and an original cocktail menu for your afterworks and evenings.

FACILITY CAPACITIES

- COCKTAIL FORMAT: 100 PEOPLE
- INDOOR SEATED: 60 PEOPLE
- SEATED TERRACE: 80 PEOPLE



OPTIONS: 🎧 DJ, 🎵 MUSICAL ENTERTAINMENT, 🌸 FLORAL DECORATIONS...



@ESPUMA.VILLEFRANCHE

VILLEFRANCHE-SUR-MER

📍 ADDRESS: 17 PROM. DES MARINIÈRES

ANCORA

THE SAILORS' CANTEN

Ancora, an adventure born from a desire to offer freedom and luxury within everyone's reach.

Ancora is an invitation to savor every moment in an atmosphere that is both friendly and inspiring. Ideal for lunches on the go, aperitifs with friends, family dinners but also for larger events such as weddings, birthdays, ...

Located in the heart of the royal port of Darse, Ancora displays its modern and bright charm inside, offering a breathtaking view of the sea and the boats on its terrace and enjoying the calm in its garden.

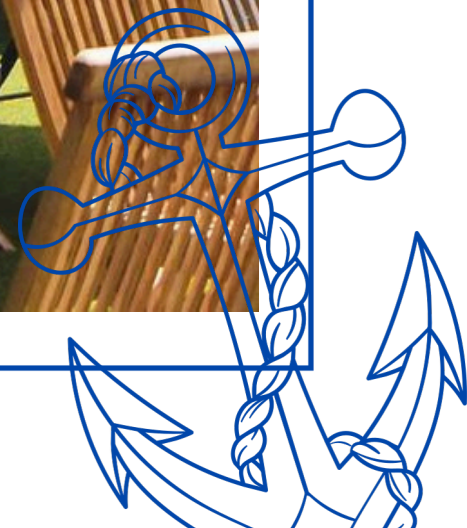
FACILITY CAPACITIES

INTERIOR SEATED: 110 PEOPLE

TERRACE SEATED: 40 PEOPLE

OUTDOOR COCKTAIL FORMAT: 80 PEOPLE

THE + :
THE
GUINGUETTE
SPIRIT



ANCORA

THE SAILORS' CAFETERIA

Ancora, an endeavor inspired by the aspiration to provide freedom and luxury accessible to all.

Ancora invites you to relish every moment in a setting that is both welcoming and inspiring. It is perfect for quick lunches, aperitifs with friends, family dinners, and larger gatherings such as weddings and birthdays.

Situated in the heart of the royal port of Darse, Ancora showcases its contemporary and luminous allure within, providing a stunning vista of the sea and the vessels from its terrace while allowing guests to relish the tranquility of its garden.

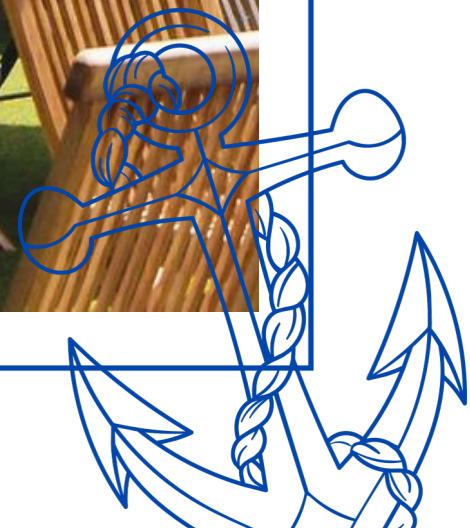
FACILITY CAPACITIES

INTERIOR SEATING: 110 PEOPLE

TERRACE SEATING: 40 PEOPLE

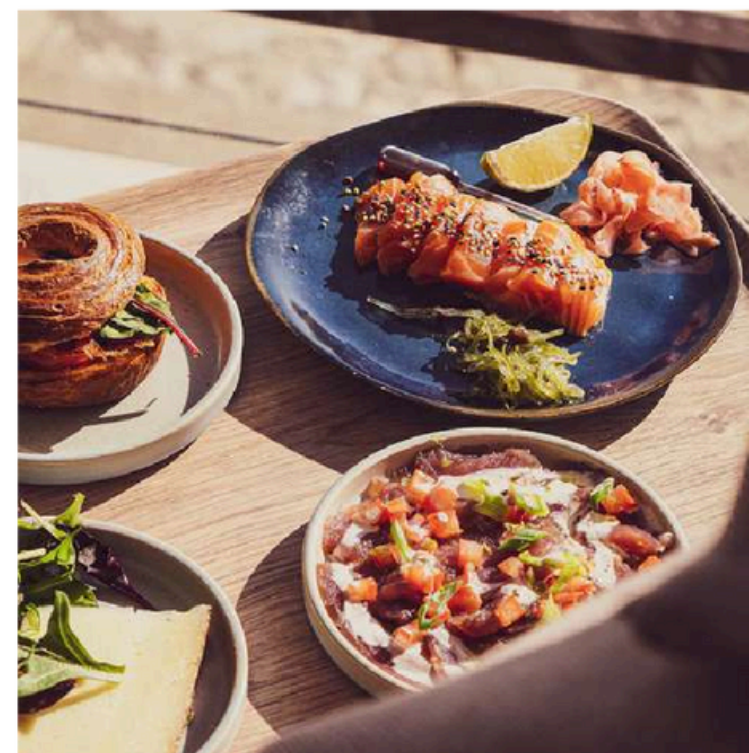
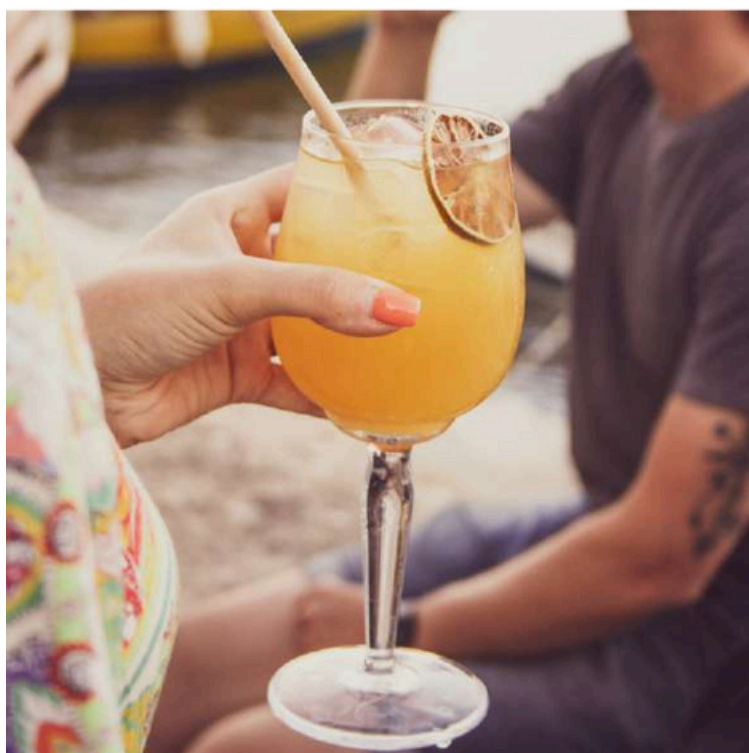
OUTDOOR COCKTAIL FORMAT: 80 GUESTS

THE + :
THE SPIRIT
OF THE
GUINGUETTE



OPTIONS: 📷 DJ, 🎵 MUSICAL ENTERTAINMENT, 🌸 FLORAL DECORATIONS...

ANCORA



@ANCORA.VILLEFRANCHE

ROYAL PORT OF DARSE
VILLEFRANCHE-SUR-MER

📍 ADDRESS: 1 QUAI DE LA CORDERIE

THE + :
THE PETANQUE
GROUND



LA CORDERIE

MEDITERRANEAN RESTAURANT

La Corderie is a restaurant nestled in one of the last authentic corners of the port of Darse in Villefranche.

The imposing plane tree that covers the restaurant terrace and its small pétanque court are a call to freshness and conviviality, a moment that reminds us of vacations.

Facing the boats, you can enjoy simple and generous Mediterranean cuisine for lunch and dinner.

FACILITY CAPACITIES

COCKTAIL FORMAT: 100 PEOPLE

INDOOR SEATED: 60 PEOPLE

SEATED TERRACE: 70 PEOPLE

OPTIONS: 📷 DJ, 🎵 MUSICAL ENTERTAINMENT, 🌸 FLORAL DECORATIONS...



@CORDERIERESTAURANT

ROYAL PORT OF DARSE VILLEFRANCHE-SUR-MER

📍 ADDRESS: 20 QUAI DE LA CORDERIE

LE + :
LA VUE
IMPRENABLE
SUR LE PORT
DE NICE



FOAM PORT

DEUX BARS À BIÈRES

Bars à bières à concept interactif et connecté FOAM propose à ses clients une expérience autour de la bière et ses différentes saveurs.

L'îlot central rend la découverte des 12 variétés de bières très accessible. En prime, nos clients peuvent profiter du libre-service pour déguster leur bière pression et ne payer que pour la quantité que qu'ils souhaitent déguster.

Joignez-vous à nous pour une partie de baby-foot amusante ou détendez-vous sur notre terrasse ensoleillée, offrant une vue imprenable sur le port de Nice.

CAPACITÉS DE L'ÉTABLISSEMENT

FORMAT COCKTAIL - TOTALITÉ : 90 PERSONNES

THE + :
THE
STUNNING
VIEW OF THE
PORT OF NICE



FOAM PORT

TWO BEER BARS

Beer bars with an interactive and connected concept FOAM offers its customers an experience around beer and its different flavors.

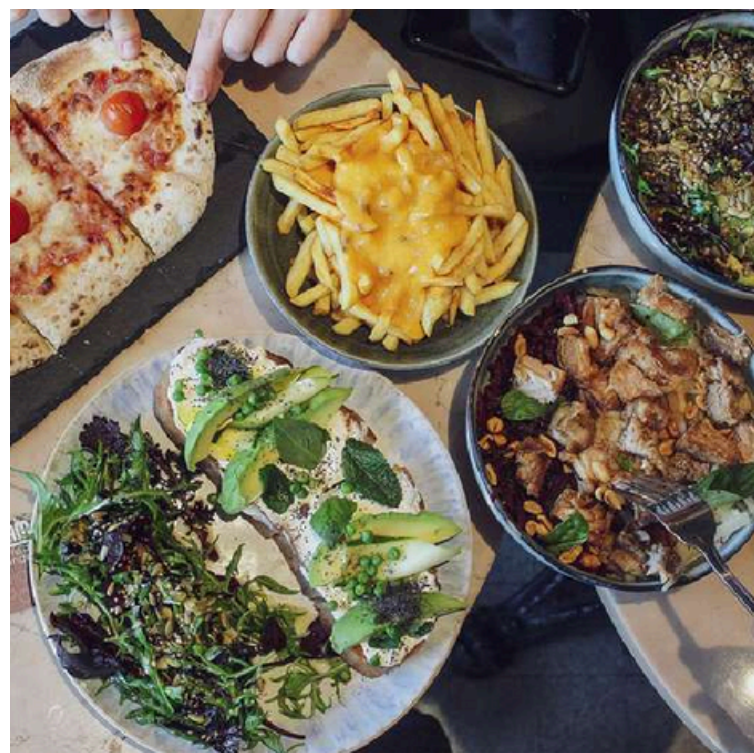
The central island makes discovering the 12 varieties of beers very accessible. As a bonus, our customers can take advantage of the self-service to taste their draft beer and only pay for the quantity they wish to taste.

Join us for a fun game of table football or relax on our sunny terrace, offering stunning views of the port of Nice.

FACILITY CAPACITIES

COCKTAIL FORMAT - TOTAL: 90 PEOPLE

OPTIONS: 🎧 DJ, 🎮 MUSICAL ENTERTAINMENT, 🏏 TABLE FOOTBALL TOURNAMENTS...



@FOAM.NICE
NICE

FOAM PORT
ADDRESS: QUAI DES DEUX EMMANUELS

THE + :
SELF-SERVICE
MACHINES



FOAM PIN

TWO BEER BARS

Beer bars with an interactive and connected concept FOAM offers its customers an experience around beer and its different flavors.

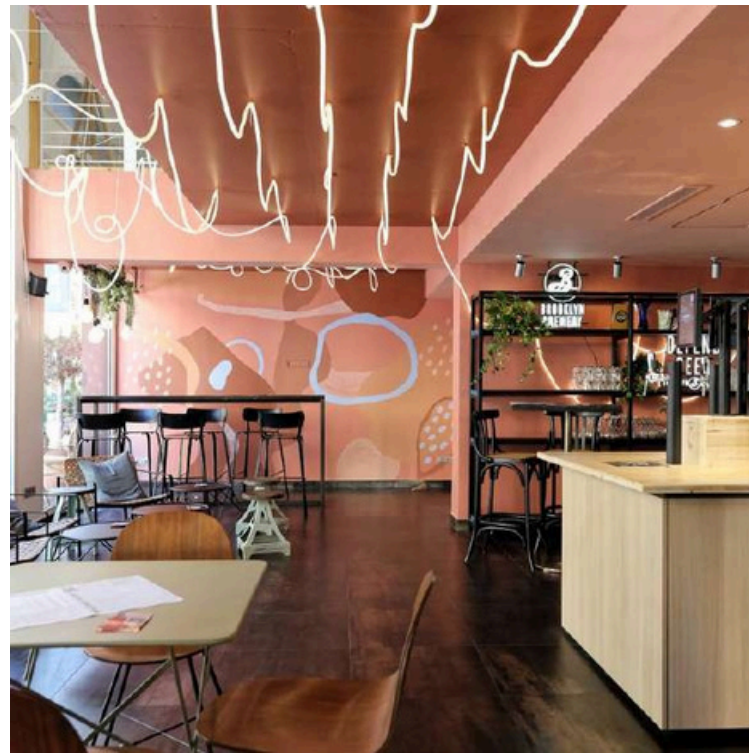
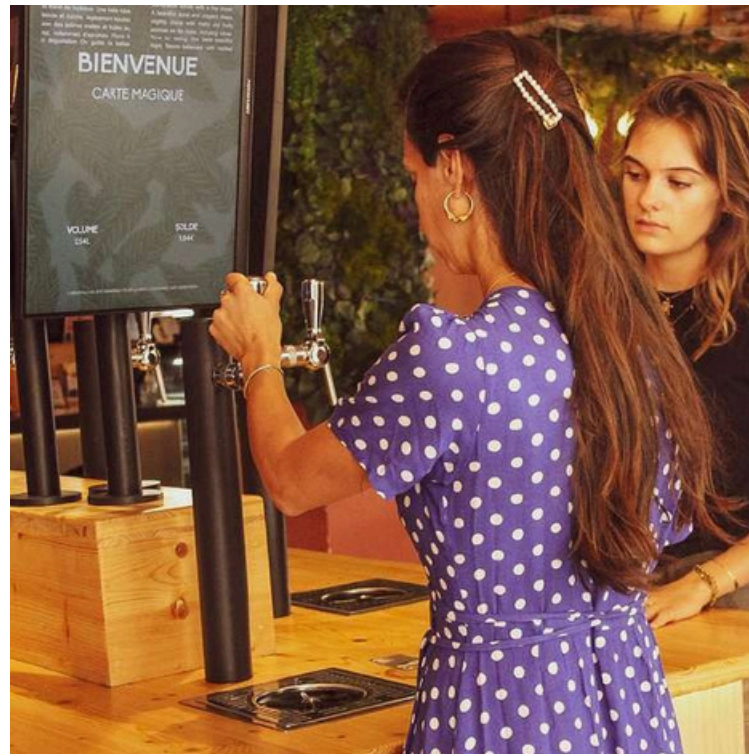
The central island makes discovering the 12 varieties of beers very accessible. As a bonus, our customers can take advantage of the self-service to taste their draft beer and only pay for the quantity they wish to taste.

Join us to experience our bar during unforgettable evenings, whether it's for our wild karaoke sessions or our fiery salsa evenings.

FACILITY CAPACITIES

COCKTAIL / FOAM PIN FORMAT: 90 PEOPLE

OPTIONS: 🎧 DJ, 🎸 MUSICAL ENTERTAINMENT, 🏏 TABLE FOOTBALL TOURNAMENTS., PROJECTION...



@FOAM.NICE
NICE

FOAM PIN
ADDRESS: PLACE DU PIN



GIGI TAVOLA

RESTAURANT WITH OR WITHOUT GLUTEN

A terrace overlooking the port of Nice and a room dominated by a central bar... Welcome to Gigi Tavola!

Gigi is a simple, tasty, quality Italian cuisine offering burgers, pizzas, pastas and desserts with and without gluten.

A restaurant with 1930s Italian decor, Gigi is a nod to the group's roots.

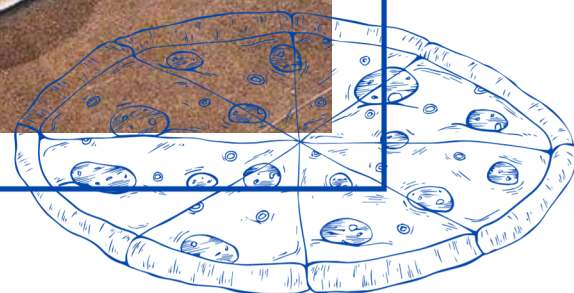
FACILITY CAPACITIES

COCKTAIL FORMAT: 120 PEOPLE

INDOOR SEATED: 65 PEOPLE

OUTDOOR SEATED: 45 PEOPLE

THE + :
THE MENU
WITH OR
WITHOUT
GLUTEN



OPTIONS: 📷 DJ, 🎵 MUSICAL ENTERTAINMENT, 🌸 FLORAL DECORATIONS, PROJECTION.....



@GIGITAVOLA

NICE PORT

📍 ADDRESS: 5 QUAI DES DEUX EMMANUELS

THE + :
THE FRIENDLY
ATMOSPHERE



LE VIRGINIE

AUTHENTIC ITALIAN RESTAURANT

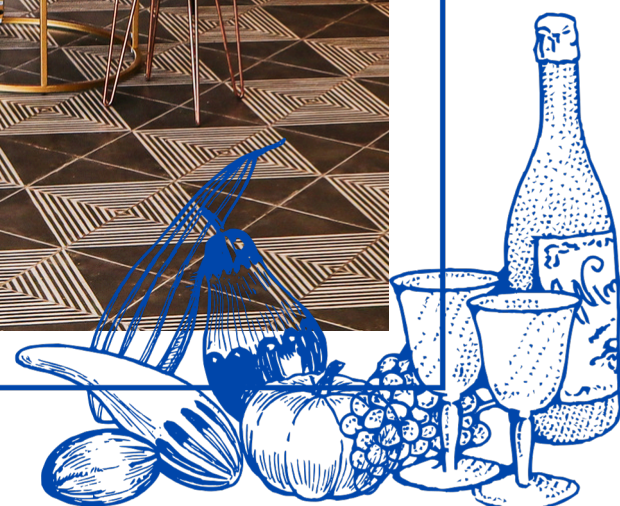
A historic family restaurant from generation to generation, it is an institution in the Riquier district of Nice.

The group's first establishment, Virginie offers its regulars and new customers simple and generous Italian cuisine.

Discover a retro decoration, a reminder of the beginnings of this great story.

FACILITY CAPACITIES

INTERIOR SEATED: 70 PEOPLE COCKTAIL SIZE: 100 PEOPLE



OPTIONS: 📷 DJ, 🎵 MUSICAL ENTERTAINMENT, 🌸 FLORAL DECORATIONS...



@LE_VIRGINIE

NICE RIQUIER
ADDRESS: 2 PL. AUGUSTE BLANQUI

ZITTO

UNIQUE SPEAKEASY ON THE PORT OF NICE

New unique speakeasy in Nice whose address is still a well-kept secret.

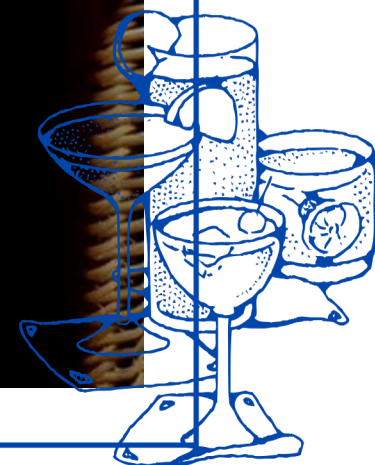
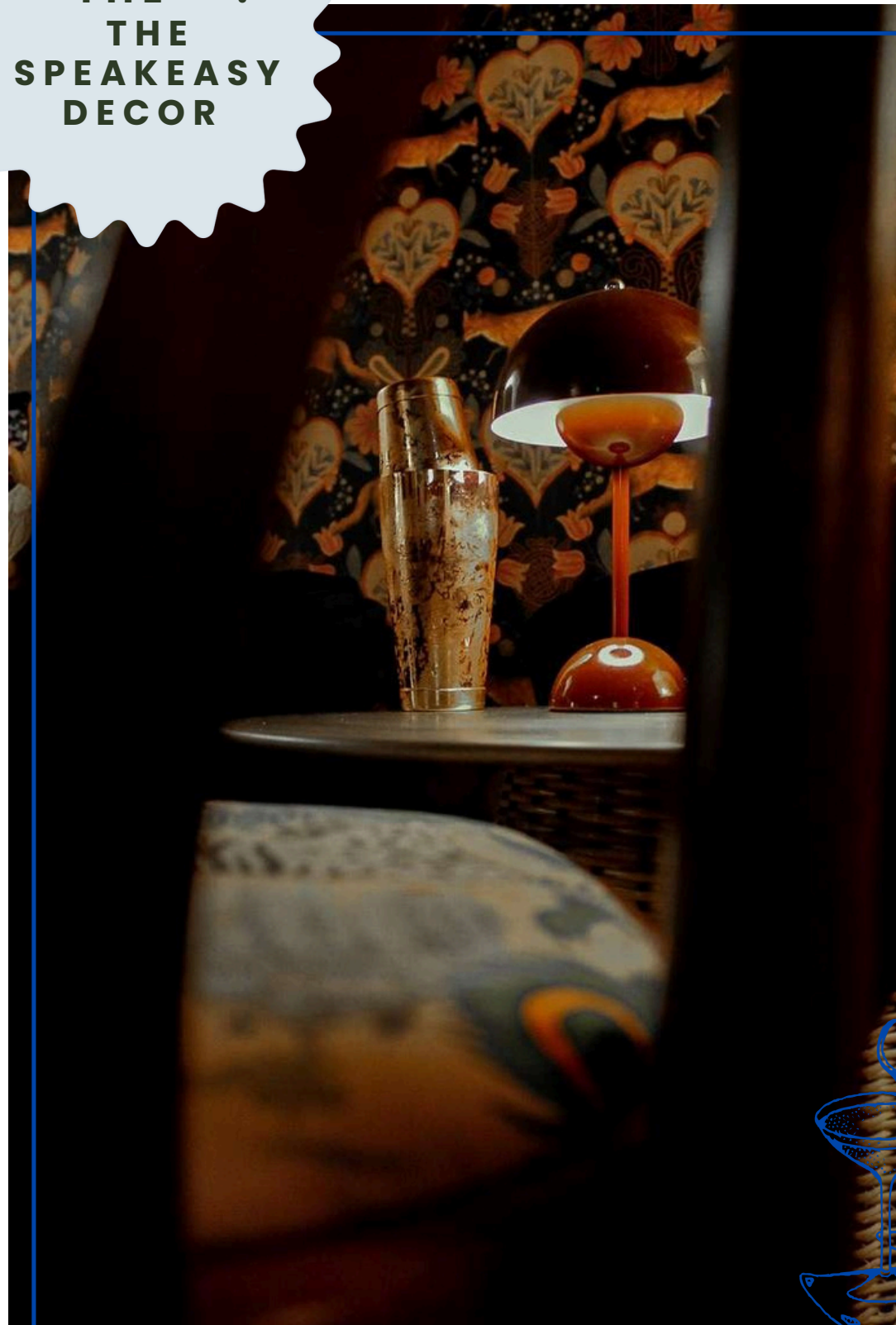
It is in the heart of this cozy and elegant place that our customers discover a unique sensory experience and sumptuous cocktails in an intimate and cozy setting.

A menu offering both classic and creative cocktails. Here, trust the bartender and enjoy your personalized cocktail.

FACILITY CAPACITIES

COCKTAIL FORMAT: 60 PEOPLE

THE + :
THE
SPEAKEASY
DECOR



OPTIONS: 📷 DJ 🎧 MUSICAL ENTERTAINMENT, 🌸 FLORAL DECORATIONS, PROJECTION...



@ZITTOSPEAKEASY

NICE PORT



ADDRESS: A CLUE IS HIDDEN IN THE FIRST INSTAGRAM POST

LE + :
LES PIZZAS
AU FEU DE
BOIS



NONNA

RESTAURANT ITALIEN DE PIZZAS AU FEU DE BOIS

Nonna est situé sur le quai du port de Saint-Jean-Cap-Ferrat.

On y découvre une vue donnant sur les bateaux qui se balancent doucement.

Nonna est un endroit familial et convivial où l'on y déguste de traditionnelles pizzas au feu de bois, une cuisine italienne.

CAPACITÉS DE L'ÉTABLISSEMENT

FORMAT COCKTAIL:	80 PERSONNES
INTERIEUR ASSIS :	20 PERSONNES
EXTERIEUR ASSIS :	60 PERSONNES



LOOKING FOR A VENUE FOR YOUR EVENT?

Baptisms Weddings
Business meals
Team Building
Seminars...

Contact Anne-Sophie:
events@paloma-beach.com

+33 6 04 59 66 82

